

SULIT

6355/1

6355/1

NO KAD

Pengenalan

English for
Science and
Technology

Kertas 1
SEPTEMBER
2007

1¼ jam

--	--	--	--	--	--	--	--	--	--	--	--	--	--	--	--	--	--	--	--

LOGO DAN
NAMA
SEKOLAH

ANGKA GILIRAN

--	--	--	--	--	--	--	--	--	--	--	--	--	--	--	--	--	--	--	--

ENGLISH FOR SCIENCE AND TECHNOLOGY (EST)

KERTAS 1

1 jam 15 minit

JANGAN BUKA KERTAS SOALAN INI SEHINGGA DIBERITAHU

Arahan:

1. Kertas soalan ini mengandungi dua bahagian: **Bahagian A** dan **Bahagian B**.
2. Jawab **semua** soalan.
3. Tuliskan semua jawapan anda untuk Bahagian A dan **Bahagian B** di ruangan yang disediakan.
4. Anda dinasihati supaya mengambil masa 30 minit untuk menjawab soalan dalam **Bahagian A** dan 45 minit untuk menjawab soalan dalam **Bahagian B**.

Instructions:

1. This question paper consists of two sections: **Section A** and **Section B**.
2. Answer **all** questions.
3. Write all your answers for **Section A** and **Section B** in the spaces provided.
4. You are advised to spend 30 minutes to answer the questions in Section A and 45 minutes on the question in **Section B**.

Section		Marks	
A	Part 1	10	
	Part 2	10	
B		30	
Total		50	

Kertas ini mengandungi 7 halaman bercetak

6355/1

SULIT

Section A

[20 marks]

You are advised to spend 30 minutes on this section.

Part 1

Read the following text and complete the given task.

Mars is the fourth planet from the Sun and is one quarter the size of our planet, Earth. Mars is also known as the ‘Red Planet’ as its surface is covered by red dust.

Mars has two moons called ‘Phobos’ and Deimos’. These two moons are not round, unlike the Earth’s moon. Mars has the highest volcano in the Solar System, ‘Olympus Mons’ measuring 26.4 km high.

This planet is cold and has a thin atmosphere. Like our planet Earth, Mars has a North and South Pole. Photographs taken on Mars show that this planet is made up of rocks and craters. Scientists believe that besides Earth, Mars can also support life because it has a little oxygen but a lot of carbon dioxide.

The outer layer of this planet is called ‘crust’, coming in next, is ‘mantle’ which is the largest part of the planet. The last part of Mars is the ‘core’, that is in the middle of it.

If your weight is 70 kg on Earth, you would weigh about 27 kg on Mars. A year on Mars equals to about 685 Earth days. The diameter of Mars is half of our planet.

(Informative Science On...The Solar System)

Based on the information in the above text, complete the table below.

MARS		
Other name (1) _____	Surface (2) _____	Moons (3) _____ (4) _____
Climate (5) _____	Physical structures (6) _____ (7) _____	(8) _____ is the highest peak

North Pole	A man weighs 93 kg on Earth, weighs	Length of year
South Pole	about (9) _____ on Mars.	(10) _____.

[10 marks]

SULIT

3

6355/1

Part 2

Read the following text and complete the given task.

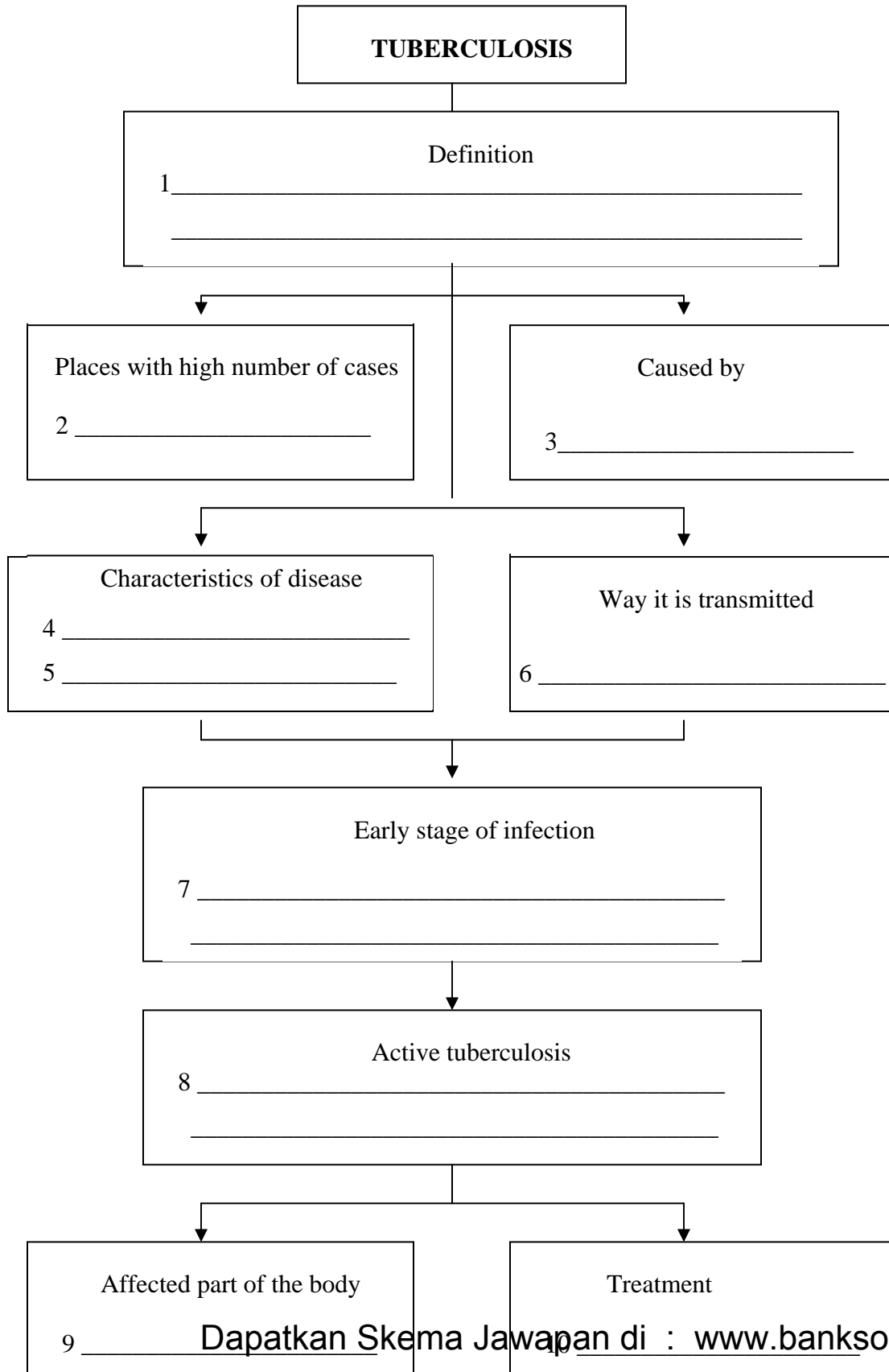
Tuberculosis is a curable illness of the respiratory system. Each year, 1.6 million people die from the disease, making it the deadliest infectious disease on the planet after AIDS and ahead of malaria, according to the UN's World Health Organization (WHO). Some 8.8 million new cases of tuberculosis crop up every year – 95% of which come from developing countries. The highest number of cases is found in China, India, South Africa and ex-Soviet Union countries.

The disease is caused by bacteria that spreads through air and is breathed into lungs. It is contagious but curable. With an estimated two billion people carrying a latent form of the infection – one out of every three people on the planet – the risk of exposing vulnerable populations to highly pathogenic forms of a disease that spreads through the air, as with the common cold, has sounded alarms among health professionals.

People who have compromised immune systems are much more vulnerable. At early stage of infection, the bacteria are alive but the body's immune system prevents it from spreading. As the infected person develops active tuberculosis, the bacteria become active and multiply, and damages lung tissue. Nearly 200,000 people living with HIV died of tuberculosis in 2005.

A skin test will show if the person is tuberculosis-infected. The active tuberculosis may affect the brain, eyes, lymph nodes, throat, spine, bones, skin and kidneys. Current treatment for tuberculosis, developed more than four decades ago, is difficult to administer and requires six to nine months of therapy. When patients fail to complete a treatment, the germ *Mycobacterium tuberculosis* that causes the disease develops a resistance to drugs to which it has been expose.

Based on the information in the text, complete the graphic organiser below.



SECTION B

[30 marks]

Study the information given below regarding the methods of waste disposal.

	Methods Of Waste Disposal		
	Landfills	Incineration	Reduction Campaign
Description	<ul style="list-style-type: none"> bury waste in a hole 	<ul style="list-style-type: none"> burning of waste 	<ul style="list-style-type: none"> campaign - reduce, reuse, recycle
Advantages	<ul style="list-style-type: none"> restore mining grounds, quarries good management and control - successful 	<ul style="list-style-type: none"> clean quick solution 	<ul style="list-style-type: none"> reduce waste, resources education - ways to reduce waste
Disadvantages	<ul style="list-style-type: none"> poor management contaminate water resources 	<ul style="list-style-type: none"> expensive waste of resources 	<ul style="list-style-type: none"> a long term plan not all materials can be reused or recycled

Write a **report** on this topic. Your report must include the following.

- a method of your choice
- comparison of the three methods
- reasons for choosing the method
- any other relevant information

Your report should not be less than 200 words.

SULIT

7

6355/1

KERTAS SOALAN TAMAT